

Standing Seam Ventsaver Kit Operation & Instruction Manual

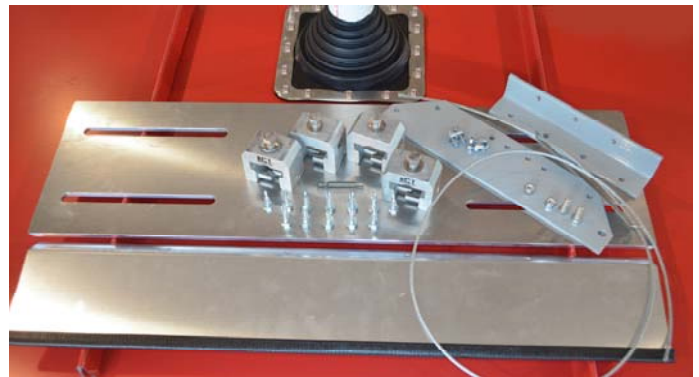
Thank you for purchasing the SS Ventsaver Kit! The SS Ventsaver Kit is an **add-on** product that allows the use of the Ventsaver products on most Standing Seam Panels without penetration. **Before installing this kit, be sure to check the Panel Matrix at www.Ventsaver.com to confirm that the RCT clamps are compatible with your seams.**

This kit includes:

- (1) 1/4" Adjustable Aluminum Plate – 19" or 27" wide
 - (1) 1/8" Aluminum Ice Ramp w/ edging strip
 - (4) RCT Universal fit standing seam clamps
 - (12) Tek screws – 1/4" x 1" 3/8" hex head
 - (12) Set screws for the clamps – 3/16" hex/allen drive
 - (4) 9/16" Hex RCT top bolts with stainless washers
 - (1) 3/16" Hex bit for set screw tightening
- Ventsaver kit includes Fin, Base Angle, (2) 1/4" x 3/4" s.s. bolts with (2) lock nuts, steel cable, 2 cable locks with 5/16" nuts.



Above photo shows the components included with the SS Ventsaver Plate.



Above photo shows the SS Ventsaver plate kit AND a Ventsaver 383* (*Sold separately).

Tools Needed for Installation

- Safety Goggles and Gloves
- Wax or Lead Pencil to mark clamp location
- Ratcheting Torque Wrench (capable of reading in in/lbs)
- Tape Measure
- 9/16" Socket
- 7/16" Socket or wrench
- 3/8" Socket
- 1/8" Drill Bit
- Screw Gun or Impact Driver
- Adjustable Wrench
- Hand Grinder , Hacksaw, or Sawzall with metal blade

The SS VentSaver Kit is available in two sizes.

SS VentSaver Plate Kit Model 12-16



Fits Up To 16" Standing Seam Panels

Model 12-16 fits seams 12" to 16" wide. This is the best option if your seams are 16" or less in width in order to avoid excessive overhang.

SS VentSaver Plate Kit Model 12-24



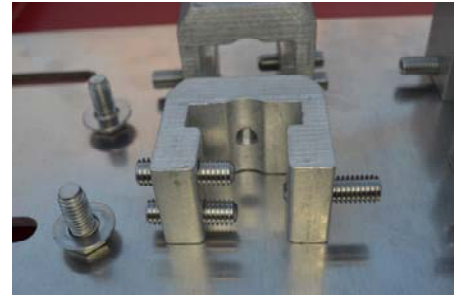
For Panels Between 17" To 24"

Model 12-24 fits all seams from 12" to 24" wide. This universal fit bracket is best used with seams wider than 16", but has the ability to span across two 12" wide seams if needed. This is a good option for contractors that need a universal fit device in stock.

Installation Procedure

Prior to installation, read and fully understand all steps required for the SS Ventsaver bracket AND for the Ventsaver device being attached to the pipe.

1. Load all 12 set screws into the RCT clamps with the cupped tips pointing inwards and the female hex end pointing outwards. Keep the single set screw flush and the 2 adjacent set screws evenly spaced so that the clamps install straight.



2. Attach the 4 clamps to the Adjustable Aluminum Plate using the top bolts and washers. Clamps should be loose and able to slide side to side in the bracket slots. Set onto seams just upslope of the pipe being protected.



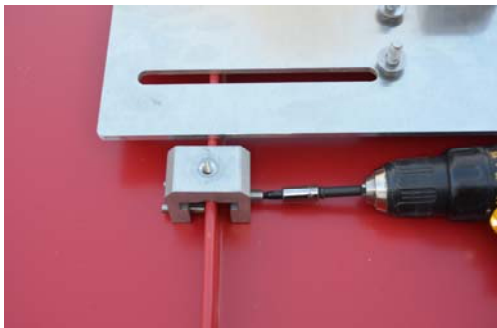
3. Assemble the Fin to the Angle Base as shown below with two 1/4" x 3/4" S.S bolts with 7/16" wrench or socket.



4. Once assembled, set it on the Adjustable Aluminum Plate so it is centered with the pipe located down slope and just touching the tip of the Fin. Move the Adjustable Aluminum Plate up the seam until the Base Angle is properly positioned and flush with the edge of the Plate closest to the pipe. Mark the (4) holes in the Base Angle and the location of all 4 RCT clamps on the seam. Pre-drill 4 pilot holes, with a 1/8" drill bit, using the holes in the Base Angle as a guide. **Make sure not to drill thru the roof panels.** A small block of wood temporarily slid underneath the plate works well. **Before running the screws in the plate, make sure the Tek Screws will not touch the roof panel when tightened.** Fasten Base Angle to Adjustable Aluminum Plate using (4) Tek Screws, 3/8" bit, and a screw gun.



5. Remove the RCT top bolts and set the Adjustable Aluminum Plate/Ventsaver assembly aside. Using a 3/16" bit and screw gun or ratchet, attach the clamps to the seams and set to 90 IN/LBS with a torque wrench capable of reading IN/LBS. Hold steady downward pressure on the clamps to be sure they stay flat and centered on the seam.



- Position the Adjustable Aluminum Plate/VentSaver assembly over the clamps and reinstall the top bolts and washers. Torque the top bolts to 90 IN/LBS. Regardless of where the pipe protrudes through the panel, the Adjustable Aluminum Plate is always centered on the seams with an equal overhang on both sides.



- Run the cable thru the hole in the top of the Fin, around the pipe and back through the hole. Install a cable lock on either side of the Fin as shown, being sure to lock both cables in each cable lock. Vice grips can be used to hold the cable together while you install the cable locks using 5/16" socket and screw gun. Trim off or tuck in the excess cable.



The Next Step is Essential for This Product to Perform Properly!

- Installing the Ice Ramp – This component is vital to keeping ice from sliding under the Adjustable Aluminum Plate assembly and damaging the base of the pipe and/or the boot. The Ice Ramp needs to be custom cut to properly fit your roof. A Sawzall with metal blade, hand held angle grinder with cutoff blade, chop saw, or a simple hacksaw can be used. Take precautions by using gloves and safety goggles to protect yourself from injury while cutting and installing the Ice Ramp.

Mark the location of the seams and be sure to cut the center section about 1" narrower than the seams to avoid scratching the panel. Fasten the center piece of the Ice Ramp and 2 equal size end pieces to the upslope side of the Adjustable Aluminum Plate, making sure the lip rests on the top of the plate. Use a 1/8" drill bit to pre-drill holes every 4" and fasten with Tek screws. **Take extra care to not drill through the plate into the panels.** Use a temporary small wood block, as previously done in step 4. The Ice Ramp can be hand bent to allow for different seam heights. Be sure the edging is tightly in place and that it rests on the panel when screwed down. *Some plate designs may require you to notch out for the end of the base angle.* This is easily done by marking where the base angle will be and making two cuts 1" deep. Use pliers to bend the cut section up, then use a hacksaw or grinder to remove the section.



The installation instructions above show the pipe centered between the seams, but this isn't always the case. Regardless of where the pipe protrudes between the seams, the Adjustable Plate is always centered on the seams with an equal overhang on both sides. The Angle Base can be fastened anywhere along the Adjustable Plate to accommodate the location of the pipe. See Below for an example of an off-center pipe.

